

DISCOVER

Powerful Geospatial Capabilities Designed for the Natural Resources Industry.

OVERVIEW

Built on the powerful MapInfo Pro GIS, Datamine Discover is the comprehensive and essential package for the compilation, mapping and analysis and spatial geosciences data, whether you are conducting mineral exploration, hydrological analysis or environmental assessments. With Discover, you can analyse and manipulate high-resolution imagery and grids with ease, create drillhole plans and sections and perform geostatistical analysis.

With Datamine Discover 3D, you can effortlessly transition MapInfo Pro datasets into an intuitive 3D environment. Rapidly visualise, evaluate and model your drillhole and related datasets in true 3D, and then dynamically test your theories.

WHO USES DISCOVER?

- Exploration Geologists
- GIS Analysts
- Mine Geologists
- Environmental Scientists
- Geological Engineers

COMPILE

Make informed decisions based on an integrated and accurate view of all your data with support for over 100 industry-standard formats, including connectivity with popular geoscience applications (e.g. Leapfrog, Datamine Studio RM, Acquire and gINT), as well as image rectification, re-projection and batch ECW import capabilities.

ANALYSE

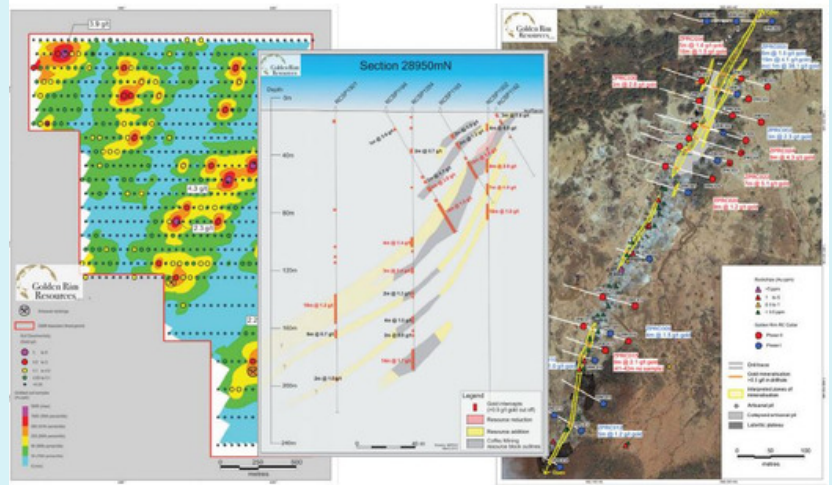
Maximise the value of your data with a wealth of advanced analytical functionality, whether you are performing anomaly identification, drillhole targeting, multi-element analysis or remote sensing, Datasets can be assessed dynamically in statistical, spatial, temporal and graphical views.

MapInfo Pro Advanced provides a comprehensive and super-fast set of raster grid interpolation, modification and analysis tools, equally capable at the prospect or continental scales.

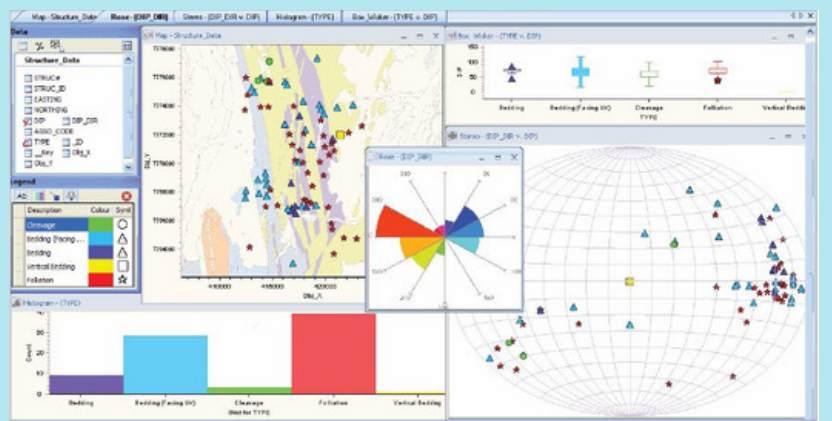
Boreholes, drillholes and trenches can all be visualised and analysed as detailed and easily updated cross-sections and plans.

MAP

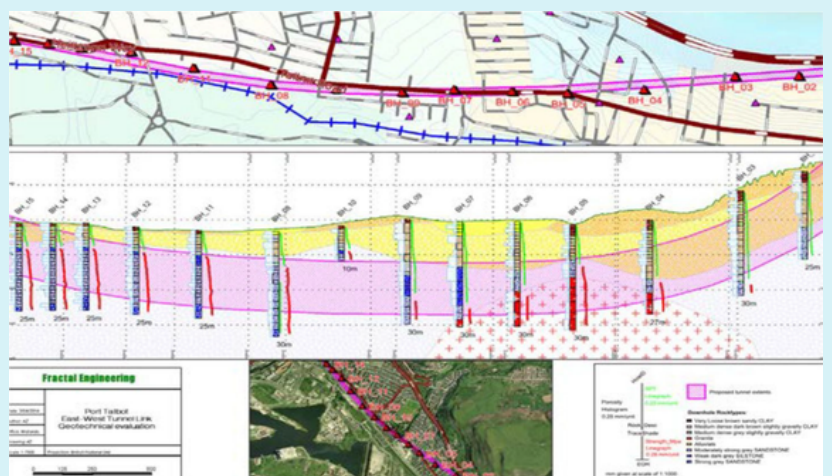
Produce high quality output more quickly and easily than ever before with the new and intuitive Layout Designer. Ensure professional results with a vast range of adornments, from embedded 3D views and location plans, through to map grids and titleblocks. MapInfo Pro provides numerous output options, such as hard copy printing, exporting to a variety of formats and publishing as interactive PDFs.



MapInfo Pro Advanced is a huge step forward in performance and usability when working with high resolution raster grid data at the largest scales.



Powerful graphical and statistical analysis capabilities ensure that you leverage the full value of your datasets.



Incorporate and assess geotechnical (eg. road tunnel design) and environmental (eg. pollution or salinity monitoring) drilling within the MapInfo Pro GIS environment.

KEY BENEFITS

- Seamless integration of geochemical, geological, environmental, geophysical, drilling and cartographic datasets into a single GIS environment.
- Extensive analytical capabilities for temporal, geostatistical, graphical and spatial trend identification and data normalisation.
- Fast and dynamic creation of high-quality professional cartographic output.
- Create, annotate and analyse detailed drillhole cross-sections, long-sections and plans.
- Cutting-edge raster grid interpolation and manipulation capabilities, including support for multi-band and multi-resolution grids.
- Powerful 3D visualisation, modelling and analysis.

KEY FEATURES

- GPS connectivity for accurate and real-time field data capture,
- Comprehensive support for the Multi-Resolution Raster (.MRR) format within most MapInfo Discover tools, including multi-banded rasters.
- The Raster group on the ANALYSIS tab incorporates Geophysical (FFT) filters, Contour Labelling and the Contour Label Positioner.
- The drillhole module implements MapInfo Pro 16.0's Geopackage as the core database, natively storing your drillhole data as a complete 3D geometry dataset.

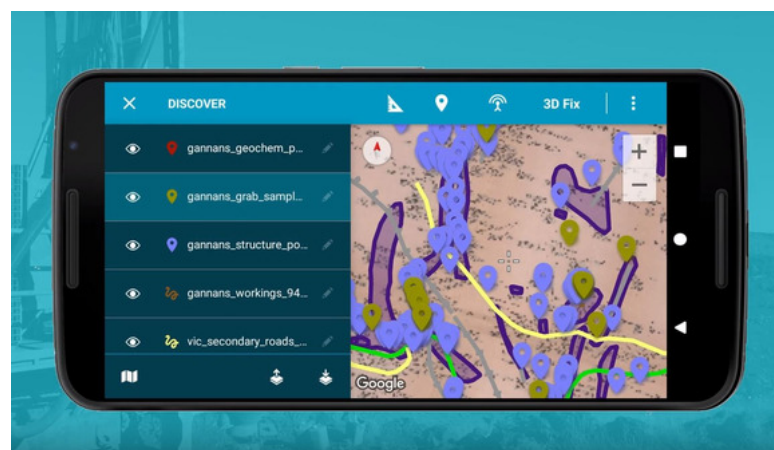
DISCOVER 2019 FEATURES

- Desktop Mobile Project Tool.
- Mobile Specific Table Validations.
- Mobile Update Source Data.
- Data Entry Image Link.
- Drillhole Project Map Layers.
- Discover 3D Step Cursor Plane Back/Forward Between Bonded Objects.
- MapInfo Rotate Map Window.
- Symbol Maker.
- MapInfo Viewer.

DISCOVER MOBILE FEATURES

(Available with Discover 2019)

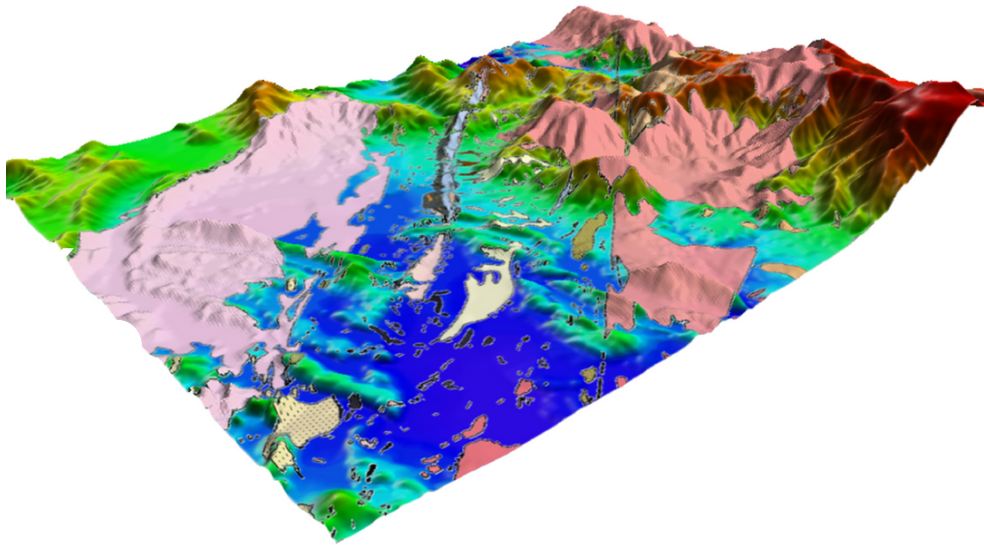
- Set up tables and picklists to take with you out into the field.
- View image, grid and vector layers whilst in the field.
- Easily navigate to selected features with an intuitive interface and design.
- Quickly collect data based on dropdown lists and link data entries to photographs.
- Sync back to the desktop and source files allowing for seamless data flow between the office and the field.



DATAMINE DISCOVER 3D

Datamine Discover 3D seamlessly extends the MapInfo Pro GIS into 3D. Visualising your data in 3D is easy, whether draping aerial photography over a terrain surface, assessing drillholes or viewing geochemical datasets. Datamine Discover 3D is also projection-savvy, with on-the-fly dataset reprojection ensuring a comparable experience to MapInfo Pro.

Gain a fresh perspective on your data, identifying and analysing subtle trends in 3D simply not apparent in the 2D environment. Powerful modelling capabilities, from solid wireframing and extrusions through to block/voxel model interpolation. Intuitively navigate the 3D environment with our new onscreen controls, or plug in a 3DConnexion SpaceNavigator controller for instinctive 'fly-through' navigation. Share 3D environments with the free Discover Viewer and produce eye-catching and immersive movies of your project with dynamic data content.



SPECIFICATIONS

Datamine Discover 2019 installs and licenses the following components:

- MapInfo Pro Advanced 17.0.2 (incorporating MapInfo Raster)
- Datamine Discover 2019
- Datamine Discover 3D 2019 (optional license extension)
- Datamine Discover Mobile (for all users under maintenance)

Supported Operating Systems:

- Windows 10
- Windows 8.1
- Windows 8
- Windows 7

GLOBAL OFFICES

AUSTRALIA | BRAZIL | CANADA | CHILE | CHINA | GHANA | INDIA | INDONESIA | KAZAKHSTAN | MEXICO | PERU
| PHILIPPINES | RUSSIA | SOUTH AFRICA | TURKEY | UNITED KINGDOM | USA